



# GAT MONTHLY MEMBERSHIP PROGRESS REPORT

Results as of: 8/31/2022

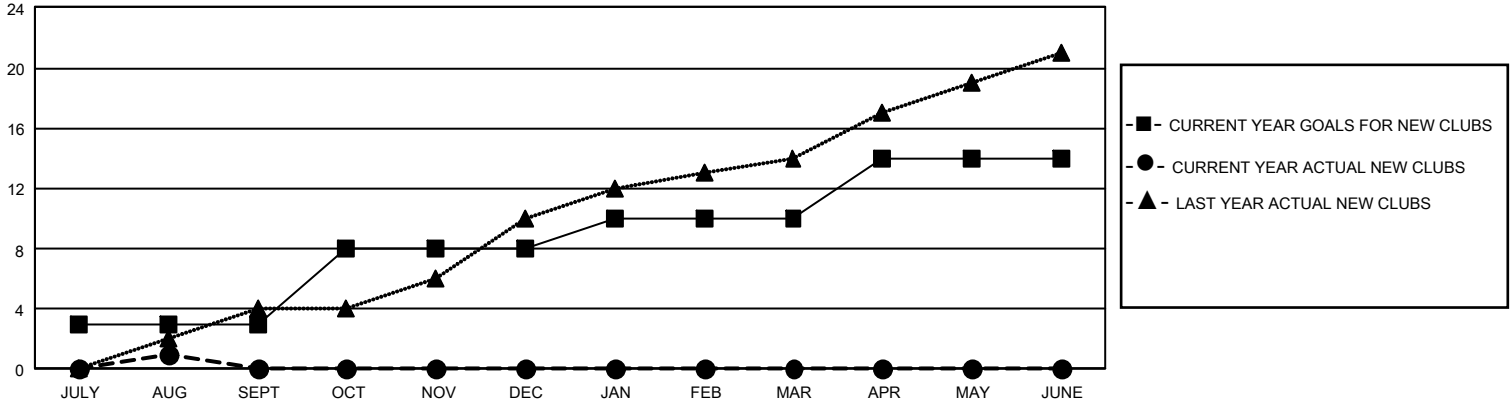
## GMT Constitutional Area 8, Group D

REPORT DOES NOT INCLUDE CLUBS IN UNDISTRICTED AREAS.

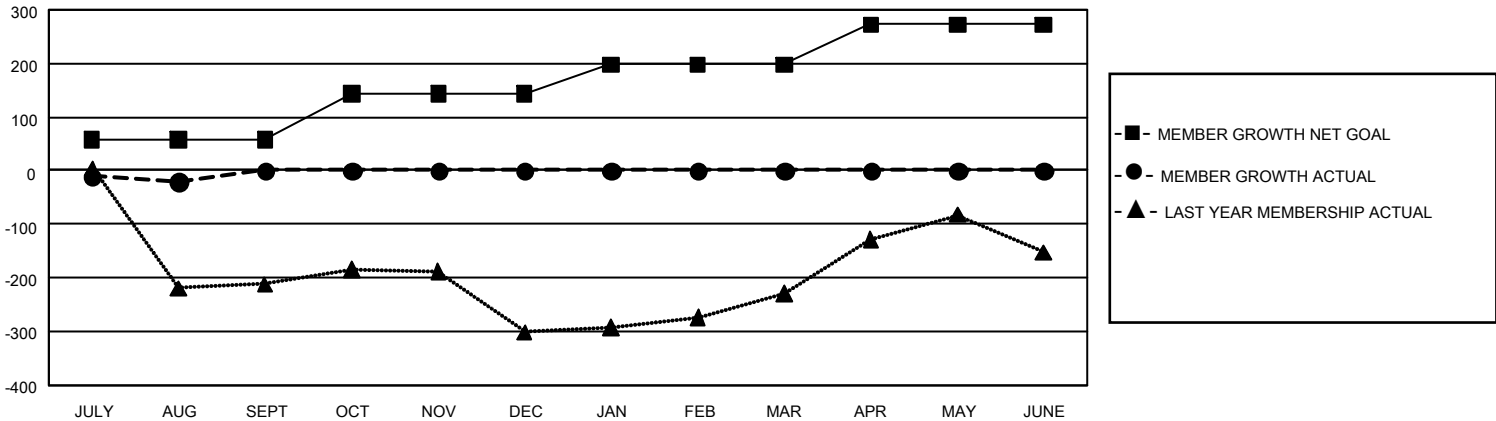
Clubs			
RESULTS FOR 2022-2023			
QUARTER	NEW CLUB GOAL	NEW CLUBS	DROPPED CLUBS
JULY/AUG/SEPT	9	1	3
OCT/NOV/DEC	15	0	0
JAN/FEB/MAR	6	0	0
APR/MAY/JUNE	12	0	0

Members			
RESULTS FOR 2022-2023			
QUARTER	MEMBER GROWTH NET GOAL	MEMBER GROWTH ACTUAL	DROPPED MEMBERS ACTUAL (including transfers)
JULY/AUG/SEPT	58	110	118
OCT/NOV/DEC	85	0	0
JAN/FEB/MAR	55	0	0
APR/MAY/JUNE	75	0	0

GOALS AND ACTUAL NEW CLUBS CUMULATIVE



GOALS AND ACTUAL MEMBERS CUMULATIVE



<b>DROPPED CLUBS: 3</b>  <b>DROPPED MEMBERS</b> DECEASED 4 CLUB CANCELLED 15 OTHER 99 <b>TOTAL 118</b>	25 CLUBS OF 187 ADDED 1 OR MORE NEW MEMBERS	<b>GENDER DISTRIBUTION</b> MALE 1,614 (40.05%) FEMALE 2,411 (59.83%) NON BINARY 1 (0.02%) PREFER NOT TO ANSWER 4 (0.10%)
	<a href="#">CLICK HERE FOR CUMULATIVE MEMBERSHIP DATA</a>	TOTAL FAMILY UNIT MEMBERS 621 FAMILY MEMBERS PAYING HALF DUES 368